

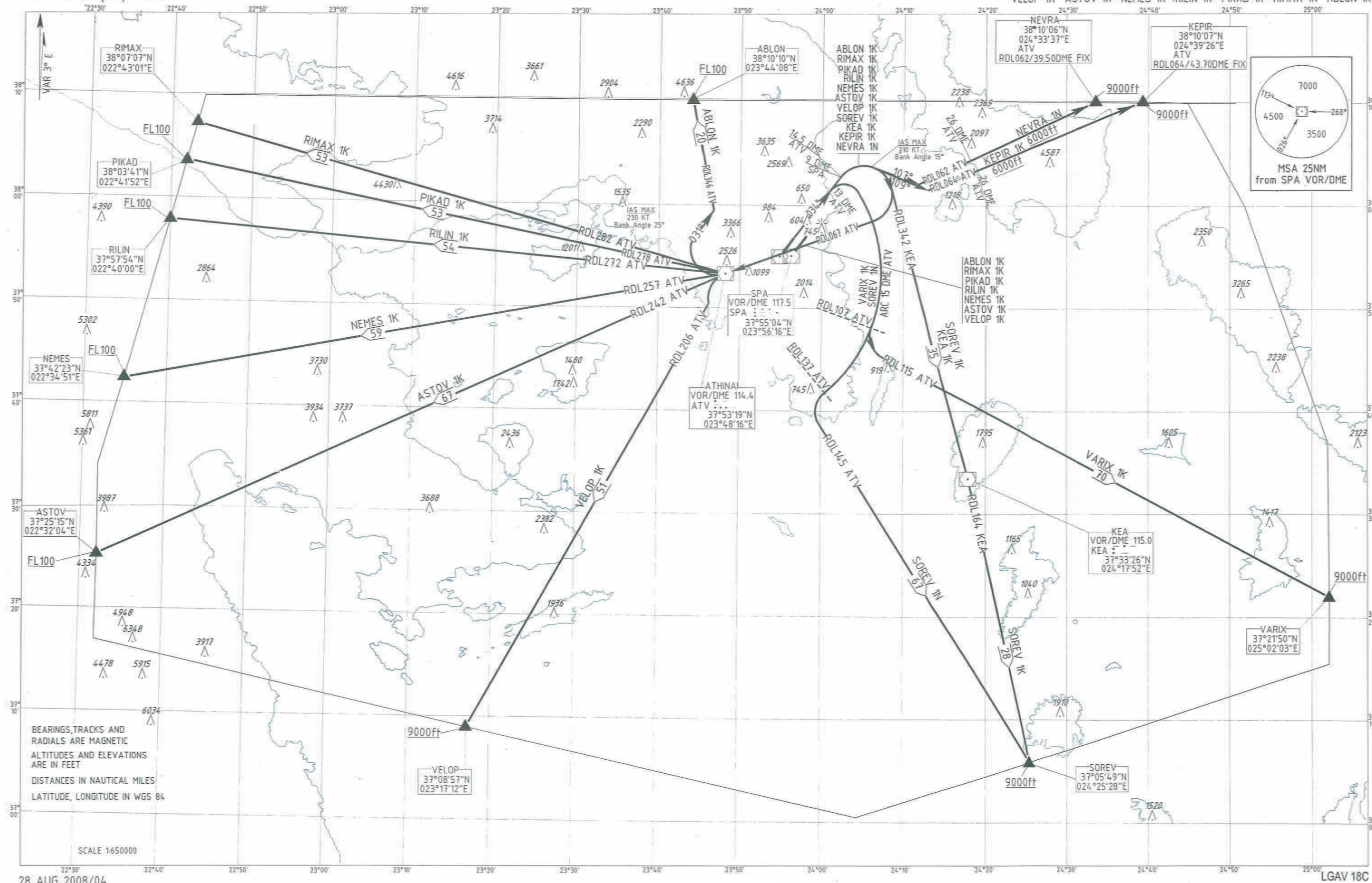
STANDARD DEPARTURE CHART -
INSTRUMENT (SID) - ICAO

TRANSITION ALTITUDE
9000 ft

ATIS 136.125

TWR 136.275 118.625
APP 128.950
ACC 134.150 125.200 134.325 133.725

SUPPLEMENTARY SIDs NEVRA 1N KEPIR 1K KEA 1K SOREV 1K VARIX 1K SOREV 1N
VELOP 1K ASTOV 1K NEMES 1K RILIN 1K PIKAD 1K RIMAX 1K ABLON 1K



ATHINAI / ELEFThERIOS VENIZELOS AIRPORT
SUPPLEMENTARY SIDs RWY 03L
SPA VOR/DME – ATV VOR/DME

VARIX 1K, KEPIR 1K, NEVRA 1N, ABLON 1K, RIMAX 1K, PIKAD 1K, RILIN 1K, NEMES 1K, ASTOV 1K, VELOP 1K, SOREV 1N, SOREV 1K, KEA 1K.

GENERAL

1. For SIDs ABLON 1K, PIKAD 1K, RILIN 1K, NEMES 1K, ASTOV 1K, initial clearance limit FL100.
2. For SIDs VELOP 1K, SOREV 1N, VARIX 1K, NEVRA 1N, KEPIR 1K, SOREV 1K, KEA 1K, initial clearance limit 9000ft.
3. For SID RIMAX 1K initial clearance limit FL120.
4. PDG (Procedure Design Gradient): 6% (365 ft/NM) up to initial clearance limit.

VARIX 1K

Climb straight ahead on track 034°. At 13 DME/ATV turn right, intercept and follow Arc 15 DME ATV. Crossing RADIAL 107 ATV, turn left intercept and follow RADIAL 115 ATV and proceed to VARIX. Cross VARIX not below 9000ft and as directed by ATC.

KEPIR 1K

Climb straight ahead on track 034°. At 9 DME/SPA (or 14.5 DME / ATV) turn right (IAS MAX 210Kt, Bank angle 15°) to track 109°, intercept and follow RADIAL 064 ATV and proceed to KEPIR. Arrange to pass RADIAL 064 ATV/26DME FIX at 6000ft or above. Cross KEPIR not below 9000ft and as directed by ATC.

NEVRA 1N

Climb straight ahead on track 034°. At 9 DME/SPA (or 14.5 DME / ATV) turn right (IAS MAX 210Kt, Bank angle 15°) to track 107°, intercept and follow RADIAL 062 ATV and proceed to NEVRA. Arrange to pass RADIAL 062 ATV/26DME FIX at 6000ft or above. Cross NEVRA not below 9000ft and as directed by ATC.

ABLON 1K

Climb straight ahead on track 034°. At 9 DME/SPA (or 14.5 DME / ATV) turn right (IAS MAX 210Kt, Bank angle 15°), intercept and follow RADIAL 067 ATV and proceed to ATV VOR. At ATV VOR turn right to track 031° (IAS MAX 230Kt, Bank angle 25°), intercept and follow RADIAL 346 ATV and proceed to ABLON. Cross ABLON not below FL100 and as directed by ATC.

RIMAX 1K

Climb straight ahead on track 034°. At 9 DME/SPA (or 14.5 DME / ATV) turn right (IAS MAX 210Kt, Bank angle 15°) intercept and follow RADIAL 067 ATV and proceed to ATV VOR. At ATV VOR turn right intercept and follow RADIAL 282 ATV and proceed to RIMAX. Cross RIMAX not below FL120 to join AWY L 613

PIKAD 1K

Climb straight ahead on track 034°. At 9 DME/SPA (or 14.5 DME / ATV) turn right (IAS MAX 210Kt, Bank angle 15°), intercept and follow RADIAL 067 ATV and proceed to ATV VOR. At ATV VOR turn right, intercept and follow RADIAL 278 ATV and proceed to PIKAD. Cross PIKAD not below FL100 and as directed by ATC.

RILIN 1K

Climb straight ahead on track 034°. At 9 DME/SPA (or 14.5 DME / ATV) turn right (IAS MAX 210Kt, Bank angle 15°), intercept and follow RADIAL 067 ATV and proceed to ATV VOR. At ATV VOR turn right, intercept and follow RADIAL 272 ATV and proceed to RILIN. Cross RILIN not below FL100 and as directed by ATC.

NEMES 1K

Climb straight ahead on track 034°. At 9 DME/SPA (or 14.5 DME / ATV) turn right (IAS MAX 210Kt, Bank angle 15°), intercept and follow RADIAL 067 ATV and proceed to ATV VOR. At ATV VOR turn right, intercept and follow RADIAL 257 ATV and proceed to NEMES. Cross NEMES not below FL100 and as directed by ATC.

ASTOV 1K

Climb straight ahead on track 034°. At 9 DME/SPA (or 14.5 DME / ATV) turn right (IAS MAX 210Kt, Bank angle 15°), intercept and follow RADIAL 067 ATV and proceed to ATV VOR. At ATV VOR turn left, intercept and follow RADIAL 242 ATV and proceed to ASTOV. Cross ASTOV not below FL100 and as directed by ATC.

VELOP 1K

Climb straight ahead on track 034°. At 9 DME/SPA (or 14.5 DME / ATV) turn right (IAS MAX 210Kt, Bank angle 15°), intercept and follow RADIAL 067 ATV and proceed to ATV VOR. At ATV VOR turn left, intercept and follow RADIAL 206 ATV and proceed to VELOP. Cross VELOP not below 9000ft. and as directed by ATC.

SOREV 1N

Climb straight ahead on track 034°. At 13 DME / ATV turn right, intercept and follow Arc 15 DME ATV. Crossing RADIAL 137 ATV turn left, intercept and follow RADIAL 145 ATV and proceed to SOREV. Cross SOREV not below 9000ft and as directed by ATC.

SOREV 1K

Climb straight ahead on track 034°. At 9 DME/SPA (or 14.5 DME / ATV) turn right, intercept RADIAL 342 KEA and proceed to KEA. At KEA intercept and follow RADIAL 164 KEA and proceed to SOREV. Cross SOREV not below 9000ft and as directed by ATC.

KEA 1K

Climb straight ahead on track 034°. At 9 DME/SPA (or 14.5 DME / ATV) turn right intercept RADIAL 342 KEA and proceed to KEA and then as directed by ATC.